

1000 Nits Super High Brightness



8K 8K Signal
4K Native 4K Resolution
HDR High Dynamic Range
P3 P3 Gamut 99% Coverage
BT.2020 BT.2020 Gamut 90% Coverage
OLED OLED Panel

32" 8K HDR P3 QD-OLED MONITOR

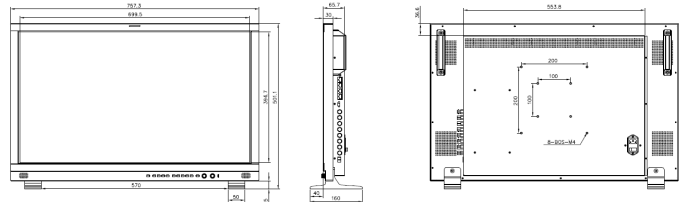
KXM-3220S is a 32inch QD-OLED 8K HDR reference monitor with 4x12G-SDI inputs/outputs. 12G-SDI quad-link supports upto 8K signal. Its color gamut can reach more than 99% of DCI-P3. With 1,500,000:1 ultra-high contrast ratio and can be used for up to 30,000 hours. It is a good choice for professional and high-quality 4K/8K color grading, post-production etc.

12G SDI 12G-SDI
BT.2020 BT.2020
Waveform Waveform
VectorScope VectorScope
Focus Assist Focus Assist
Audio Meter Audio Meter
False Color False Color
Zebra Zebra
TSL UMD TSL UMD
GPI GPI

OLED Panel	
Model No.	KXM-3220S
Display Type	OLED,99% P3
Size	31.5"
Resolution	3840 × 2160
Aspect Ratio	16 : 9
Viewing Angle	178°(H) / 178°(V)
Color Depth	1.07B
Brightness	1000cd/m ² (Peak brightness)
Contrast Ratio	1,500,000:1
Input	
1 x SDI SFP+	SDI SFP+ input cage
1 × HDMI 2.0	HDMI 2.0 Signal
4 x BNC	12G-SDI 1/2/3/4 signal inputs <i>(Auto-detected and compatible to 6G/3G/HD/SD-SDI)</i>
Output	
4 x BNC	12G-SDI 1/2/3/4 signal outputs <i>(Auto-detected and compatible to 6G/3G/HD/SD-SDI)</i>
Audio In & Out	
SDI/HDMI Audio In	16 Channels SDI 2 Channels HDMI embedded audio
Audio Meter Display	Vertical Horizontal audio level meter display
Audio Headset Output	3.5mm headset jack
Built-in Speaker	2.5W×2
General	
Input Voltage	AC 100-240V 50/60Hz
Power Consumption	160 W
VESA Installation	VESA MIS-D (200×200mm)
Accessory	Power Cord /Desktop stand

Specifications may be changed without prior notice.

Main Body

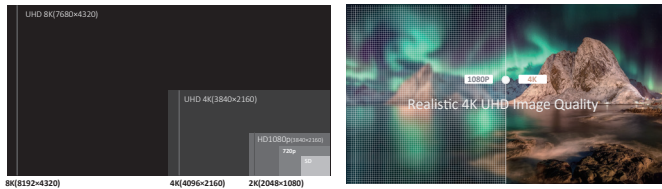


Specifications

- 3840x2160 4K/UHD resolution , 10Bit QD-OLED panel
- 1000nits brightness(Peak brightness)and 1,500,000:1 contrast ratio
- Support 8K SDI signal 8192x4320 resolution
- 12 Bit Video Processing, image no delay
- 4 x 12G-SDI inputs and outputs (6G/3G/HD/SD-SDI auto detect)
- 4K 12G-SDI single link signal, up to 4096 x 2160 60p
- 4K 12G-SDI quad link signal, up to 8192x4320 60p
- 4K/8K signal: 2 Sample Interleave (2SI), Square Division (SQD)
- 1 x HDMI 2.0 input, 1 x SDI SFP+ module optical input cage
- 4K Mode, Quad-Split Mode, FHD single picture mode
- 4 x SDI/HDMI Quad-View: mixed inputs & frequency rates
- Free Quad-View (boarder control/window adjustment)
- Payload ID display
- Color Space & EOTF Curves Auto Setting, matching(Rec.709/Rec.2020)
- Color Space (Rec.709/EBU/DCI-P3 D65/DCI-P3/Rec.2020/Bypass)
- HDR: PQ (ST2084), HLG (1.03/1.11/1.16/1.20/1.27/1.33)
- Sony Camera Log Curves: Slog, Slog2, Slog3
- Canon Camera Log Curves: Clog, Clog2, Clog3
- ARRI Camera Log Curves: LogC/DJI Camera Log Curves: Dlog
- Panasonic Camera Log Curves: Vlog, Vlog (softroll)
- DJI Camera Log Curves: Dlog,
- Gamma (2.0, 2.2, 2.4, 2.6), HDR Area Display
- 4K HDR Waveform, Vector Scope, Marker/Box Control Function
- 3D LUT Color calibration with ColourSpace & CalMAN
- 3rd-party 3D LUT files import(USER1~6)
- S1-S8 Eight Selectable Scene Settings
- Picture Flip, Focus Assist, False Color, Zebra
- SDR and HDR comparison, Darkness Check
- Full Scan, Over Scan, Blue/Mono Only
- 16ch Embedded Audio Level Meters
- Dynamic and Static UMD Display (TSL3.1/4.0/5.0)
- 608/708 CC Closed Caption
- Key Lock, Video Freeze
- Firmware upgrade/LUT file import via USB/Ethernet
- GPI (selectable/markable windows)
- Aluminum Alloy Casing, Built-in Speaker

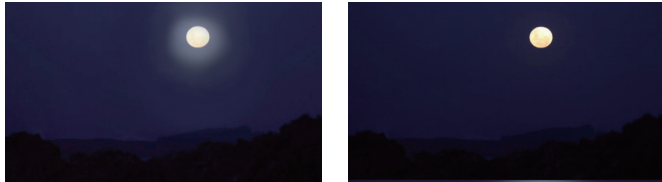
8K Signal, Native 4K Resolution

Supporting 8192x4320 8K signal, including 4320p 23.98, 24, 25, 29.97, 30, 50, 59.94 and 60p. With advance image processing, 8K HDR monitor restores a real world for eyes.



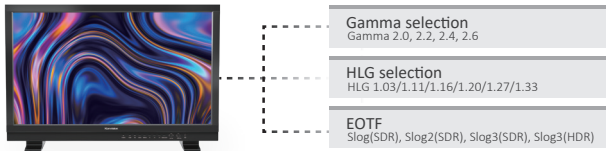
Unparalleled black level

Featuring a 1,000,000:1 contrast ratio with an absolute black of 0.0005 nit, OLED panel reproduces extreme black details, and brings a stunning experience.



EOTF Curve Conversions

Konvison KUM 4K, 8K and KVM-6X series supports a variety of EOTF curve conversion applicable to the broadcast industry and digital film standard. A preset of lots of camera logs and gamma curve selections, so as to realize the perfect combination with the camera system.



HDR Waveform, HDR Area Display

HDR reference white is 203nits. The part that exceeds the reference white level (203nits) considered as the HDR highlight part, and the HDR highlight ratio should not exceed 20% of the entire image. HDR waveform, HDR area display can make the HDR info more intuitively displayed, which is more convenient for users.



2SI and SQD 4K signal



4K 2 Sample Interleave (2SI) : Pixel based segmentation



4K Square Division (SQD) : Quadrant based segmentation

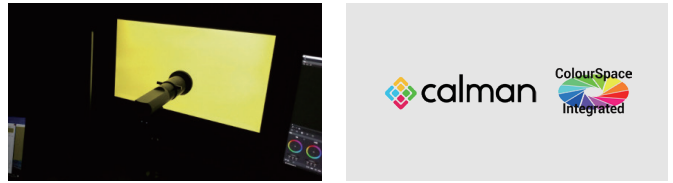
Fastest Response Time

The OLED panels' response time is only 0.1ms! Far exceeding the normal LCD, perfectly bids farewell to the phenomenon of trailing and jaggies of high-speed moving pictures. This rapid fast response benefits to the smooth fast-moving content, great for sports broadcasting.



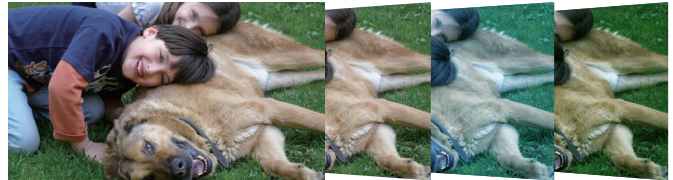
3D LUT Color Calibration

Compatible with ColourSpace and Calman calibration software, Konvison monitors apply K10-A probe(professional level) to achieve a precise color. Monitor's also workable with universal colorimeters including CA210, CA310, CS200, CR100, CR250, X-Rite i1 Display.



3D LUT files import

With the LUT loading function, users can load 2 different 3D LUT files with different color types according to their own needs, making DIT, post production and grading work simpler and more intuitive, optimizing the work flow and improving work efficiency.



Quad View Mode

Quad View Mode support mixed inputs & frequency rates. Each window can change to single picture mode with shortcut button or GPI. Each windows can select different color space and HDR waveform.



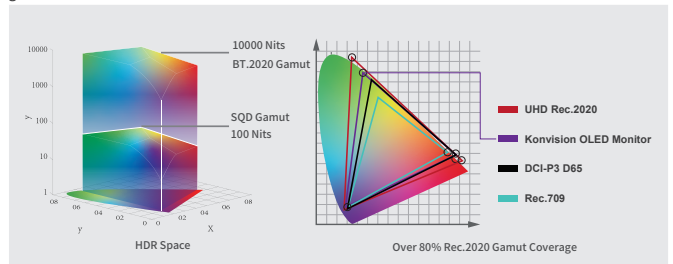
High Dynamic Range(HDR)

Konvison KUM 4K, 8K and KVM-6X series support HDR display. Adjustable HDR modes include PQ(ST2084), HLG with Rec 2020 color gamut. It reproduces a greater dynamic range of luminosity and provides extremely high level picture quality.



Super Wide Color Gamut

With 99% P3 and over 80% Rec.2020 gamut coverage, which offers a much more gorgeous picture quality. It's superb for HDR content due to its extreme contrast ratio and wide color gamut.



Anti-Burn-In Technology

Using technology that helps protect against burn-in to the panel, it greatly reduces the burn-in-image issue after long hours stay in the same image of the OLED monitors.

